

# Waste Water Treatment

## Highlights

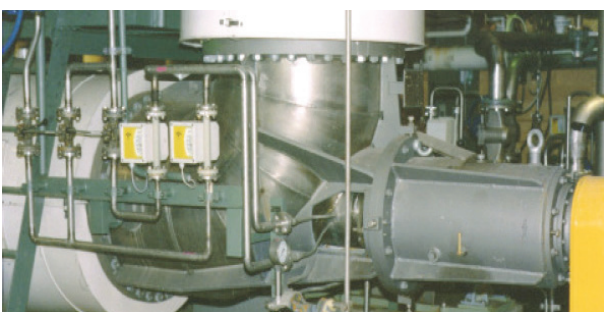
Evaporation of salty process waste waters to recover high quality salt (e.g. NaCl) which can be marketed. The contaminants are concentrated for minimum discharge.

## Feedstocks

Process waste waters containing salt and other contaminants.

## Process Characteristics

1. Pre-treatment by filtration to remove solid impurities and/or pH adjustment
2. Crystallization of high grade salt
3. High contaminant loadings can be handled
4. Liquid purge can be eliminated
5. Plant designed to minimise scaling

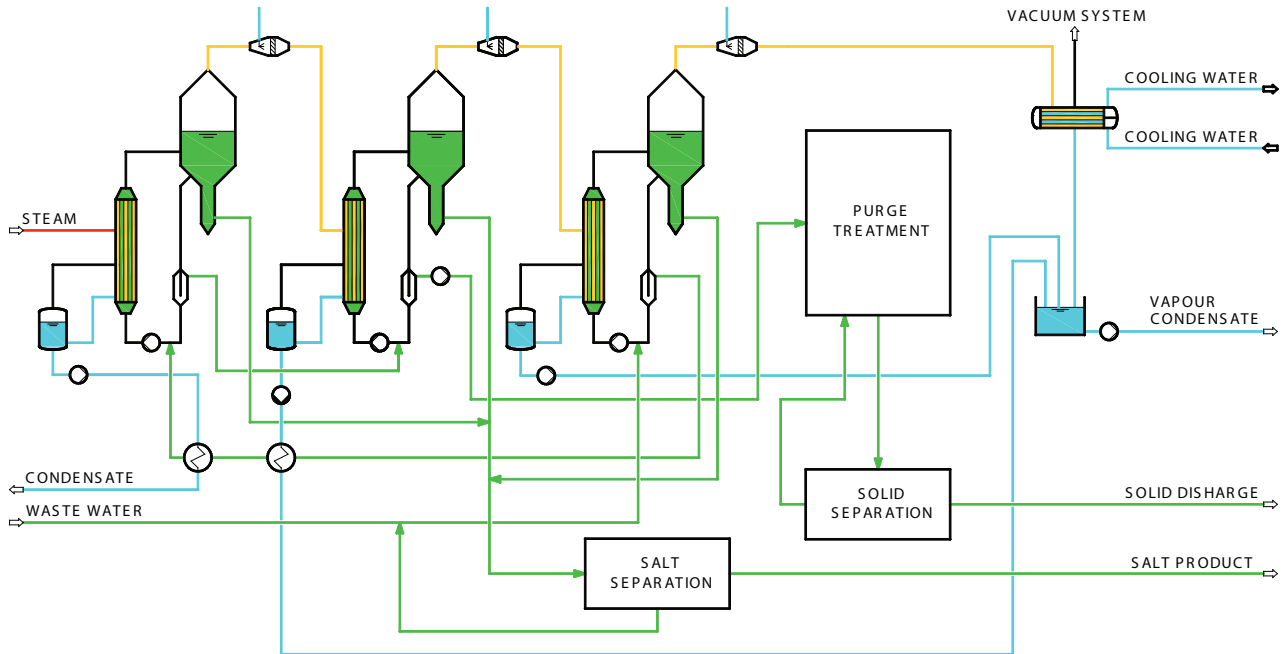


Circulation Pump



Centrifuge

## Typical Flow Diagram



## Plant Characteristics

- Multiple effect or MVR system to optimise energy costs
- Forced circulation evaporators to handle solids
- Centrifuge for salt separation and washing